

# HOME DESIGN EXPO 2014



Ferreiras  
*Tile + Bathroom*

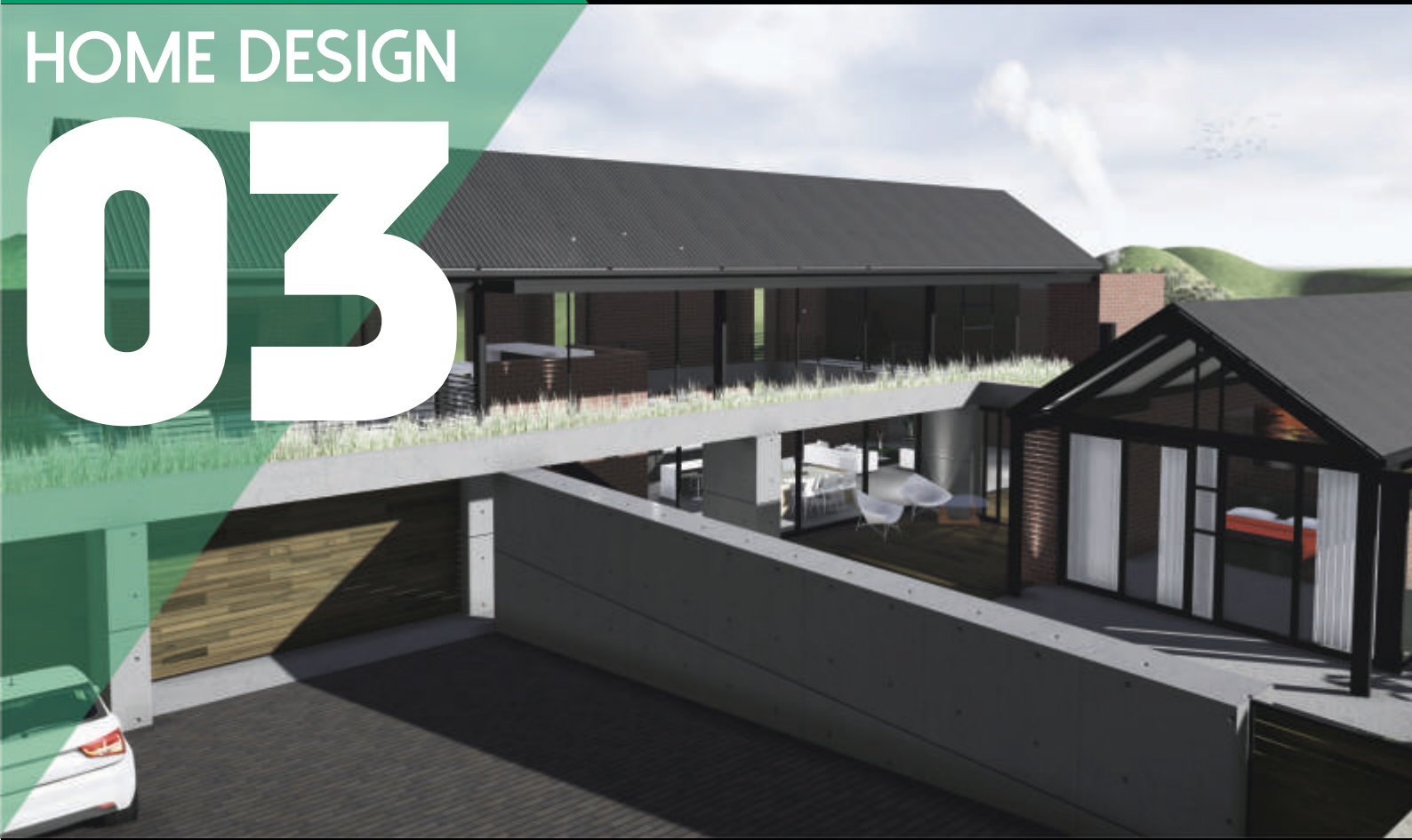
*Out of the Ordinary™*



THE HILLS  
GAME RESERVE LIFESTYLE ESTATE

HOME DESIGN

03



DRAWBOXDESIGNSTUDIO  
ARCHITECTS

**BOBTONS**  
construction

## ► ARCHITECT

Drawbox Design Studio

## ► BUILDER

Bobtons Construction

## ► SPECS

- House size: 410m<sup>2</sup>
- 4x bathrooms + guest toilet
- Open plan lounge
- Open plan dining area
- Open plan kitchen
- 2x braai areas
- Cocktail bar scullery
- Servants quarters
- Triple garage
- Sun deck swimming pool with water feature

HOME DESIGN

# 03



## HOME DESCRIPTION

Born from the ground the concept of the 410m<sup>2</sup> Hill House was conceived as a contextual response to the 820m<sup>2</sup> site. The design intent was to explode the boundary between nature and house. Planted roof terraces carry the natural landscape through the fragmented store-like structures reminiscent of a typical vernacular farm compound, so often found in the Highveld landscape. These two structures then accommodate the living and private spaces. Nature is interwoven into structure and structure into nature, separated from each by only glass.

Large open living spaces flow across two levels to ensure the un-developable hill North of the stand is not forgotten. Large north facing overhangs in the form of screens and deep recessed terraces to the east not only ensures optimal thermal conditions in the home but also animates the interior spaces as filtered light and constantly changing shadows move across wall and floor surfaces.

Between the sheds, a part inside, part-outside space lives out into a courtyard that can be enclosed to the east by glazing that slides away into the wall. The space flows over and into a linear splash-pool complimenting and expressing the linear nature of the two sheds.

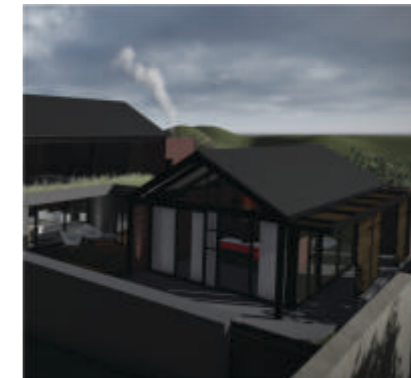
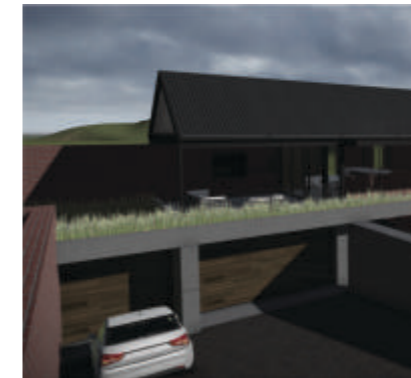
Materials utilized are honest to their raw form and function they serve, contributing to the beautiful sculptural nature of the structure.



► **A DESIGN INTENT TO EXPLODE THE BOUNDARY BETWEEN NATURE AND THE HOUSE**

## INNOVATION & GREEN DESIGN

Installed within this Expo house is a range of exclusive technologies boasting among others: A solar hybrid system to produce the household's power. A Solar air heating along with energy efficient electrical under floor heating systems heats the interior in winter. LED lights and Day light harvesting light controllers exploits the ambient light and reduce power consumption. VSD powered pool pumps reduce inefficiency of the conventional pumps. Rainwater harvesting tanks capture water from hard surfaces and the planted terraces. The water captured from the planted roofs naturally filter the water reaching the tanks and nutrient rich water is in turn recycled back into the garden. Recycled bricks and a high content fly-ash is used in the concrete mix. A home automation system controls and measures the energy output of the house, to ensure internal comfort is achieved by utilizing minimal energy.



► **LARGE OPEN LIVING SPACES FLOW ACROSS TWO LEVELS**



HOME DESIGN

# 03

## DRAWBOX DESIGN STUDIO ARCHITECTS

As young and **dynamic** architects we are **passionate** about the opportunities generated by our rapidly changing world. It's within responding to these changes that a new architecture is born.

Responsive design must adapt to the needs of our **social, environmental** and **economic** landscape. Our holistic contextually appropriate approach will ensure **elegant** and **innovative** solutions to the realities we are faced with today. A **context** responsive design endures the momentary trends of time and ensures its value is maintained throughout its lifecycle.

Drawbox Design Studio is a proud member of the Green Building Council of South Africa. The application of green design principles lies at the heart of our every architectural endeavour. We strive through continuing professional development to become the leader in providing sustainable building solutions. We believe in a "hands on" collaborative approach and that the design intent is carried through every detail and phase of the project in order to ensure an end product of only the highest quality.

## BOBTONS CONSTRUCTION

**Bobtons Construction** is a premier residential and small-scale commercial construction company based in Gauteng, South Africa. Established in 1984, Bobtons is proudly a father/son business that prides itself on reputation, quality and reliability. Bobtons creates memorable, affordable and superior construction products for all of our clients. From start to finish our service will be memorable, neat, efficient and beyond client expectation. We achieve these things by exercising attention to detail, using quality sub contractors, micro managing and pre planning. Bobtons Construction has extensive industry knowledge gained through many years of experience on previous projects. We work exclusively with our own team of qualified site foreman and specialists. Bobtons has an in house architect and interior design and decorator and works exclusively with it's own first-rate plumbing, electrical and landscaping teams. Bobtons Construction takes pride in all completed projects and values the relationships that are maintained with clients long after our work is complete.

## CONTACT

► **Drawbox Design Studio**  
www.drawboxstudio.co.za  
Carlu Swart  
carlu@drawboxstudio.co.za  
082 339 5834

► **Bobtons Construction**  
www.bobtonsbuilding.co.za  
Jason  
jason@bobtonsbuilding.co.za  
079 504 2328



This home was specifically designed to fit into this prestigious lifestyle estate. It conforms to the Hills uniquely South African style of architecture which embraces "green living" and open space.

For more information on this estate or to arrange an exclusive meeting please feel free to contact one of our representatives.

**Augustine: 083 635 5215**

**Les: 084 075 3270**



THE HILLS  
GAME RESERVE LIFESTYLE ESTATE  
HOME DESIGN  
**03**

SPONSORS



▶ **Nudek**  
www.nudek.co.za  
Duard Kleyn  
duard@nudek.co.za  
082 601 9358



▶ **Tile Vision**  
www.tilevision.co.za  
Donovan Lawson  
don@tilevision.co.za  
011 325 2893



▶ **Green Leaf Alternative Solutions**  
www.greenleafas.co.za  
David Falkenberg  
david@greenleafas.co.za  
011 705 2427



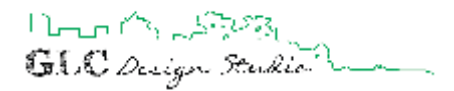
▶ **Penguin Pools**  
www.penguinpools.co.za  
JP Zietsman  
jpz@penguinpools.co.za  
012 800 1021

▶ **PG Glass (Kyasands)**  
www.pgglass.co.za  
Graig Hannibal  
craigh@codeonline.co.za  
011 794 1754



▶ **Expand-A-Drain**  
www.expandadrain.co.za  
Farrel Levin  
info@expandadrain.co.za  
011 053-6574

▶ **Coastal Hire**  
www.coastalhire.co.za  
Piennie Cloete  
piennie@coastalhire.co.za  
0118057184



▶ **Morso Fireplaces**  
www.morso.co.za  
Ken  
info@morso.co.za  
011 516 0290

▶ **SMEG Appliances S.A.**  
www.smeg.co.za  
Susie Fourie  
susie@smegsa.co.za  
011 656 0025



▶ **EasyLife Kitchens (Faerie Glen)**  
www.easylifekitchens.co.za  
Mark Cronje  
faerieglen@easylife.co.za  
012 991 4819

▶ **Slabline**  
www.slabline.wozaonline.co.za  
Chantelle McCabe  
chantelle@slablineptyltd.co.za  
082 951 9938

▶ **Eco Lifestyles**  
www.ecolifestyles.co.za  
Charles Barnes  
charles@ecolifestyles.co.za  
086 111 5206



▶ **Four Seasons Gardens**  
www.fourseasonsgardens.co.za  
Jackie Deysel  
jackie@fourseasonsgroup.co.za  
011 763 2925

▶ **Sunnywin Hengs Energy**  
www.hengs.com  
Ryan Juan  
bingbiny@hotmail.com  
082 714 1315

▶ **O2 Air**  
www.o2air.co.za  
Rubin Peleias  
info@o2air.co.za  
011 618 0595

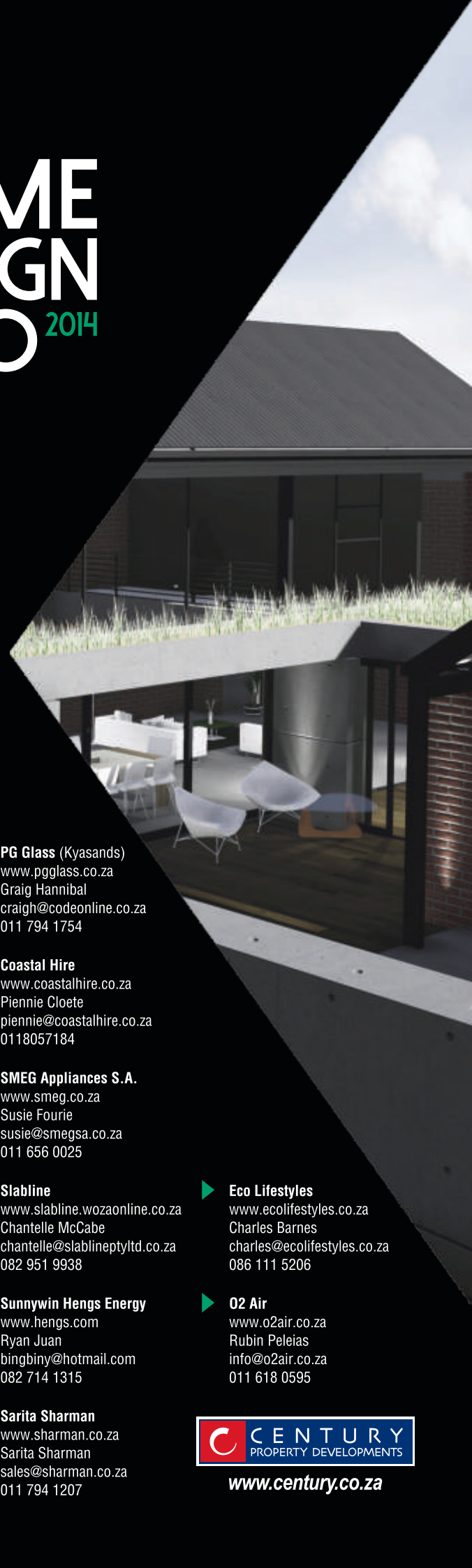


▶ **GLC Design Studio**  
www.glcdesignstudio.com  
Grant Gove  
grant@glcdesignstudio.com  
082 334 2525

▶ **Sarita Sharman**  
www.sharman.co.za  
Sarita Sharman  
sales@sharman.co.za  
011 794 1207



# HOME DESIGN EXPO 2014



www.century.co.za